

TOP TEN THINGS YOU NEED TO KNOW ABOUT PARTNERING WITH MICHIGAN EDUCATION CORPS



MICHIGAN EDUCATION CORPS

A HOPE NETWORK INITIATIVE

10. WHAT IS AMERICORPS?

AmeriCorps is an independent agency of the United States government that engages more than five million Americans in service.

Watch this 2 minute video about [AmeriCorps.](#)



Want to learn more? Visit nationalservice.gov.

9. WITH WHOM AND WHAT DOES MEC PROGRAMMING DO?



Kindergarten - 3rd Grade
1:1 tutoring for 20 min daily to achieve grade level reading by end of 3rd grade.



4th - 8th Grade
Paired or triad tutoring groups for 90 min weekly so students are algebra ready by 9th grade.



Ages 3 - 5
1:1, small group & whole classroom instruction for Kindergarten readiness.

8. WHAT DO INTERVENTIONISTS DO?



Interventionists tutor your students following a consistent schedule every week using high-dosage, evidence-based practices & assessments.

7. WHO ARE MEC INTERVENTIONISTS?



An Interventionist is an AmeriCorps member serving with Michigan Education Corps in a full-time or part-time capacity during the school year.

6. HOW ARE INTERVENTIONISTS RECRUITED?



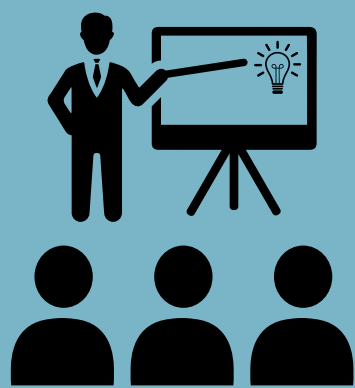
We leverage your school & community networks through digital advertising, job boards, campus recruiting, community events, and word of mouth to find passionate and local candidates.

5. WHAT BENEFITS DO INTERVENTIONISTS RECEIVE?

- Competitive living stipend.
- Education award for tuition or to repay student loans (Tutors who are 55+ can gift to a grandchild, step-child or foster child.).
- Student loan forbearance and interest repayment.
- Health insurance with \$0 monthly premium.
- Child care assistance for full-time positions.
- Opportunity to earn a CDA or MI-YDA credential at no cost.

*All financial benefits are paid by Michigan Education Corps.

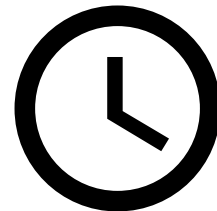
4. HOW ARE INTERVENTIONISTS TRAINED?



We provide hybrid training at the beginning of a member's service, followed by additional training days throughout the year.

Site-based coaching for interventionists is an essential element of our model.

3. HOW MUCH TIME IS NEEDED FROM MY STAFF?



Designate a staff person to be an Internal Coach for 2-3 hours per week, per interventionist, for the following:

- Attend required online training and scheduled data review meetings.
- Observe interventionist two times/month.
- Review student progress monthly.
- Check-in with interventionist regularly.

2. WHAT DOES MY SCHOOL CONTRIBUTE?



- Participate in recruitment process.
- Time commitment from Internal Coach.
- Participation Fee.
- Space for the interventionist to conduct sessions.
- Electronic device for members to complete training and MEC sponsored meetings.

1. HOW WILL IT HELP MY STUDENTS?



- Directly address unfinished learning caused by the pandemic.
- Reading Corps students are 3X less likely to be referred to Special Education.
- Reading Corps tutoring resulted in significant impacts across students most vulnerable to low achievement.
- MEC Math Corps students demonstrated growth in fact fluency equal to a full additional year of typical growth.

Talk with us!

We invite you to contact us and ask any questions you have about partnering.

Holly Windram, PhD

MEC Executive Director (616) 260-9674
hwindram@hopenetwork.org

Renee Borg, MA

Director of Programming and Operations (616) 490-4408
rborg@hopenetwork.org