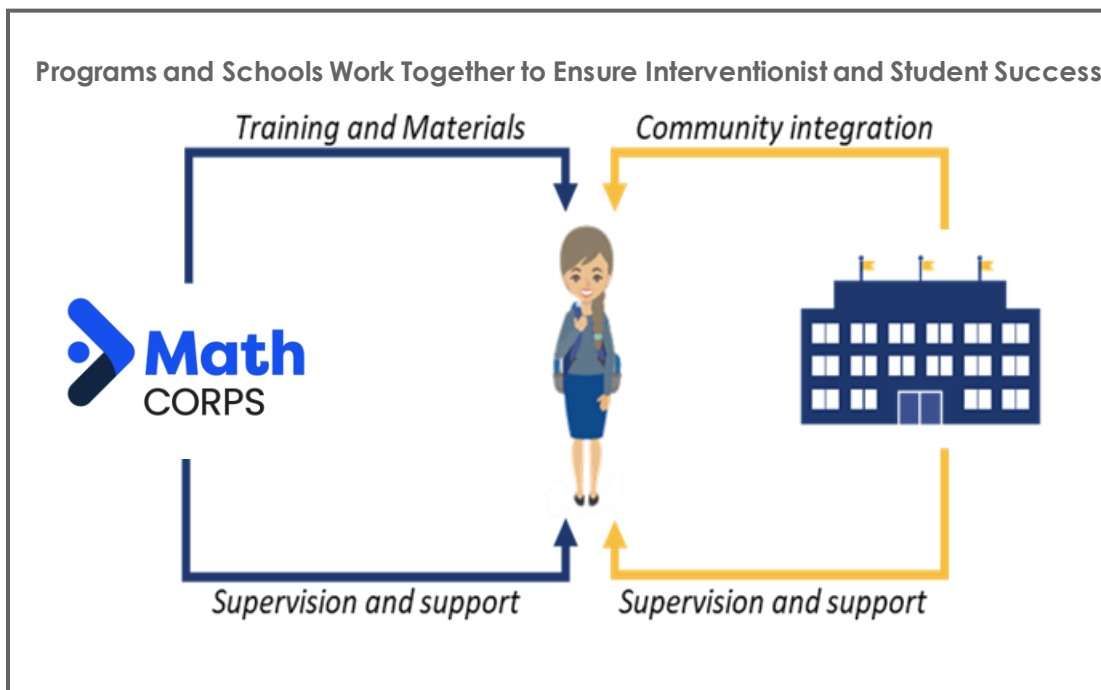


MEC Math Corps Fact Sheet

MEC Math Corps is an evidence-based math-intervention program delivered by AmeriCorps Members that provides 90 minutes of weekly intervention to students in groups of two to three to improve foundational math skills required for long-term academic success and algebra readiness. MEC Math Corps typically serves students in grades 4 through 8.

What are MEC Math Corps services?

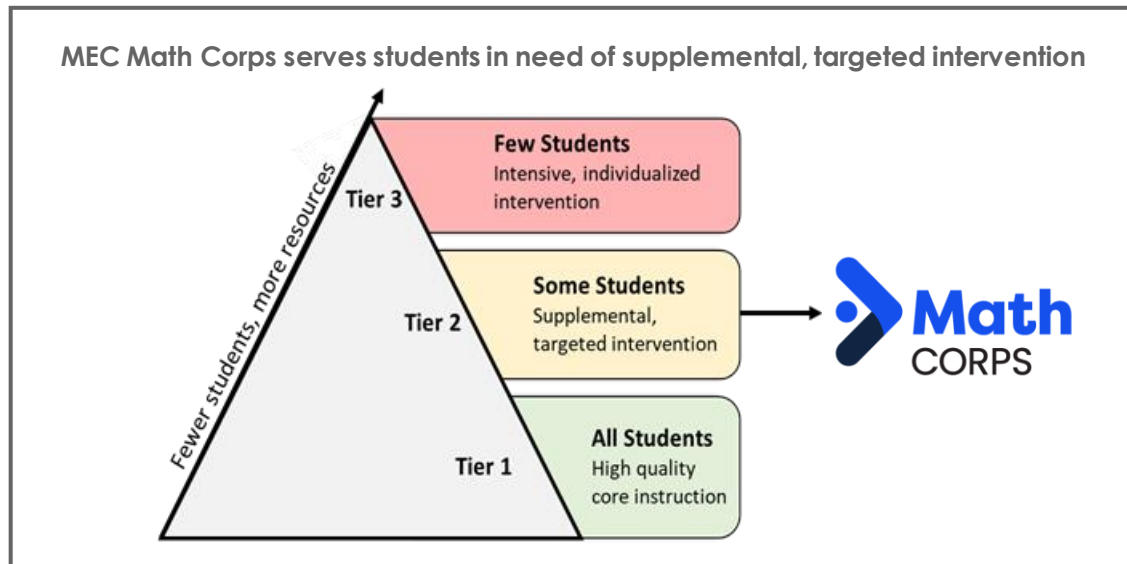
- MEC Math Corps is an evidence-based, standard protocol, math intervention program developed to align with state and Common Core Standards to deliver interventions to students in grades 4 through 8. The program includes scripted inventories to guide service delivery.
- MEC Math Corps activities are aligned with Common Core State Standards and State Math Standards related to whole and rational number understanding and algebra.
- AmeriCorps members (also referred to as “Interventionists”) are the engine for MEC Math Corps. Interventionists are initially trained to deliver an entire Tier 2 intervention package. Interventionists are supported by a program coach (Coaching Specialist) and a staff member at the partnering site (Internal Coach).
- Interventionists are intended to be fully integrated into the school community and Internal Coaches help with that integration. Interventionists who feel like they are part of the school community tend to have greater satisfaction and are better positioned to help the students in the school.



Which students are eligible for MEC Math Corps services?

- Interventionists, Coaches, and teachers work together to identify students for support using state test scores.
- Students served by MEC Math Corps are typically in need of “Tier 2” support within a tiered model of service delivery. They are likely students yet to reach grade-level targets and in need of additional opportunities to practice key skills so that they can better access core instruction.

- Students receiving Special Education or English Language services are eligible on a case-by-case basis, as determined by the Internal Coach in collaboration with the MEC Math Corps Coaching Specialist.



When are services delivered?

- Interventionists support students during the school day outside of core instruction times or if possible before and after school. Scheduling requires support from teachers, administrators, and the Internal Coach.
- Students participating in MEC Math Corps receive 90 minutes of intervention weekly in groups of two to three.

How does an interventionist know what to teach?

- Each grade level has a unique scope and sequence that align with the Common Core State Standards.
- Formative assessments are built into the MEC Math Corps program model to ensure Interventionists know which unit to start in, when additional practice is needed and when it's time to move on to the next skill.
- Interventionists typically DO NOT provide homework help.

Who are the Interventionists?

- Interventionists commit to a year of national service through AmeriCorps. They receive a competitive living allowance and earn hours of service toward an education award to pay for college tuition or pay educational expenses at qualified institutions of higher education, for educational training, or to repay qualified student loans. For member's age 55 years+, this award may be gifted to a child, grandchild, foster child, or stepchild. Retired educators may serve as MEC Interventionists without forfeiting their pension.
- Interventionists come to the program from all walks of life. They may be recently retired, taking a gap year or mid-career break, or seeking experience before pursuing an education degree.
- Although Interventionists are part of the school community, they are **not** employees of the school and/or district and they **may not** be used to replace services provided by the school or site

employees. Likewise, MEC Math Corps Interventionists are not allowed to be assigned to lunchroom duty, playground supervision, etc. at the school.

Is MEC Math Corps a Good Fit for Your Site?

MEC Math Corps thrives in a wide variety of contexts.

Please consider the following before applying:

- ❑ Does your school serve students in fourth, fifth, sixth, seventh and/or eighth grade?
- ❑ Is student contact time sufficient for an Interventionists schedule? Full-time Interventionists serve a caseload of 24-30 students and part-time Interventionists serve a caseload of 12-16 students.
- ❑ Is there support for research-based math interventions to occur during the school day outside of core instruction?
- ❑ Is there someone on your staff with the interest, capacity, and time to serve as the Internal Coach? **Please go to page 10 for the “Description of Internal Coach” in this document and review it. Review this with the identified staff person in advance of applying to host MEC Interventionists. Ensure they understand the role and time commitment.**
- ❑ How will the Internal Coach's schedule reflect time for MEC Math Corps duties (approx. 6-9 hours per Interventionist per month, which is 2-3 hours per week)? How will the Internal Coach's schedule include approximately 5 hours of training?
 - Do you need to compensate the Internal Coach for the time completing required training?
 - How will you compensate the Internal Coach for time spent on MEC Math Corps duties throughout the year?
 - Are there tasks/duties/responsibilities that need to be removed from this individual's workload to accommodate MEC Math Corps duties?

Here are some other factors that are helpful to consider:

- ❑ What curriculum are you currently using, if applicable, and what assessments do you use and for what purpose?
- ❑ To which computer(s) or other device(s) and internet would Interventionist(s) have regular, reliable access? Regular access to an electronic device is required and must include a camera and microphone, along with login credentials.
- ❑ What secure (locked) storage could the Interventionist utilize (for student files, for personal effects, etc.)?
- ❑ How is the Response to Intervention/Multi-Tiered Systems of Support model of service delivery utilized at your site? In what areas (e.g., academic, behavior)?
- ❑ Estimate the number of students who performed below proficiency in math on their previous year's state accountability test. Is there enough for an MEC Interventionist(s) caseload of a minimum of 24 students (full-time) or 12 (part-time)?

- What local district or agency policies for partnerships will MEC need to follow? For example:
 - Background checks. MEC is required to run extensive background checks for any MEC Interventionist prior to placement in a school. MEC, nor Interventionists, may pay for additional background checks beyond what MEC is required to conduct. **If additional background checks are required, that will be a site cost.**
 - Interventionist Recruitment. How can we partner to post open Interventionist positions on a district or site employment page or share the opportunity on social media?
 - MEC Partner Sign. Our grant requires posting a sign (provided by MEC) with the AmeriCorps logo, MEC Math Corps logo, and potentially the logo of any funder who is sponsoring the program at your site. Where could this sign be posted? (Most sites post this sign at the main office or tutoring location).